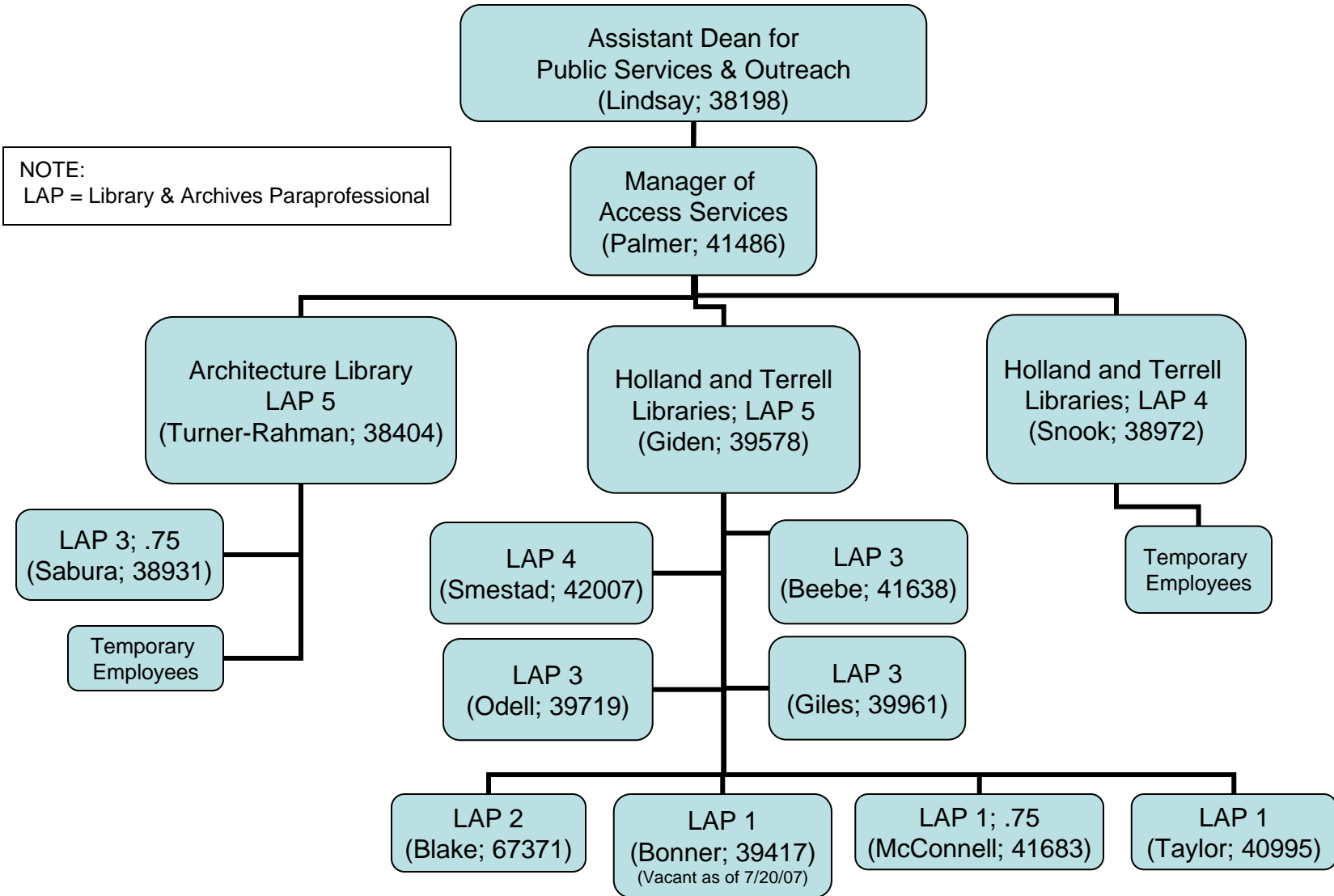


Washington State University Libraries Access Services (including the Architecture Library) Organization Chart – July 1, 2007

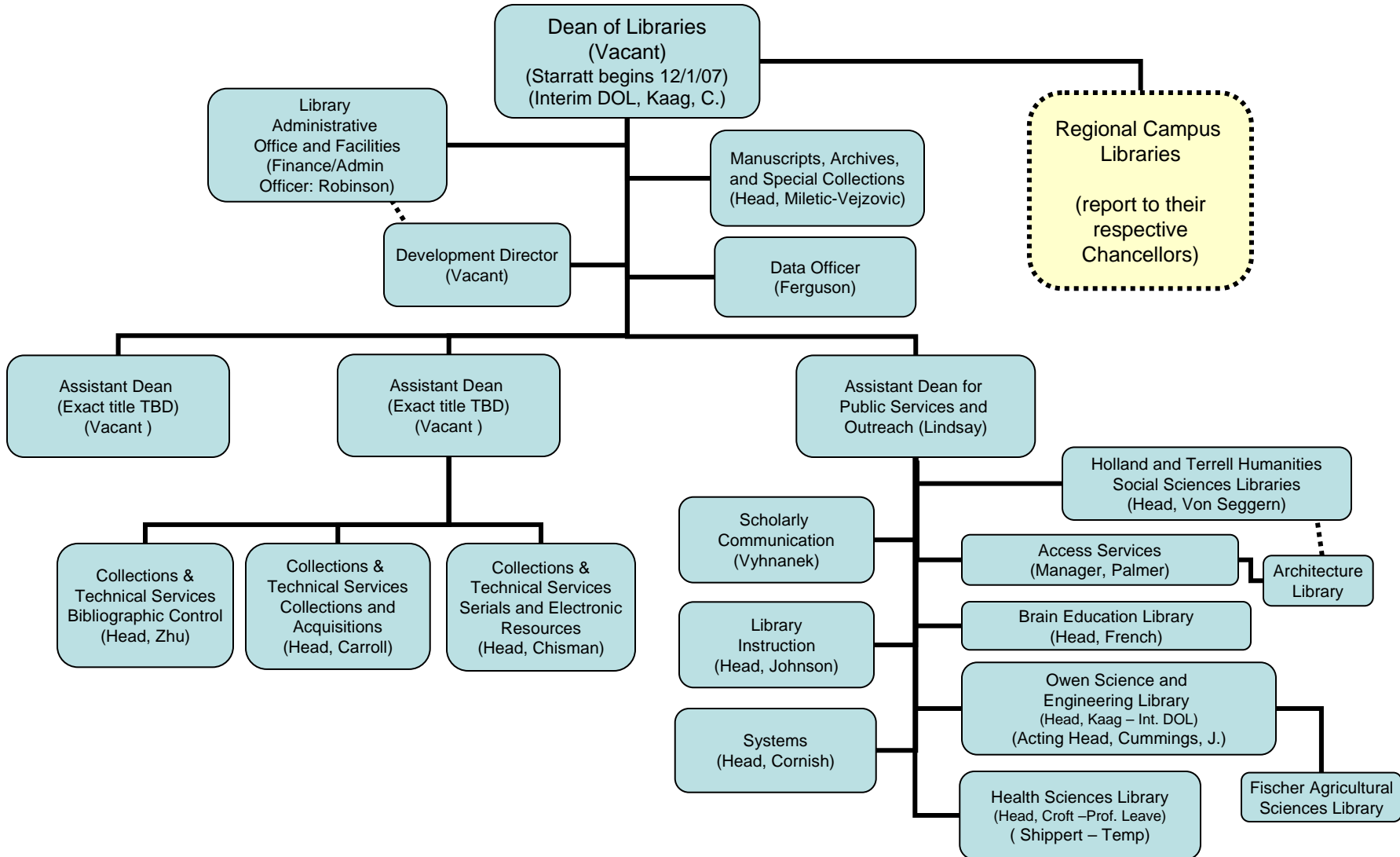
NOTE:
LAP = Library & Archives Paraprofessional



Washington State University Libraries

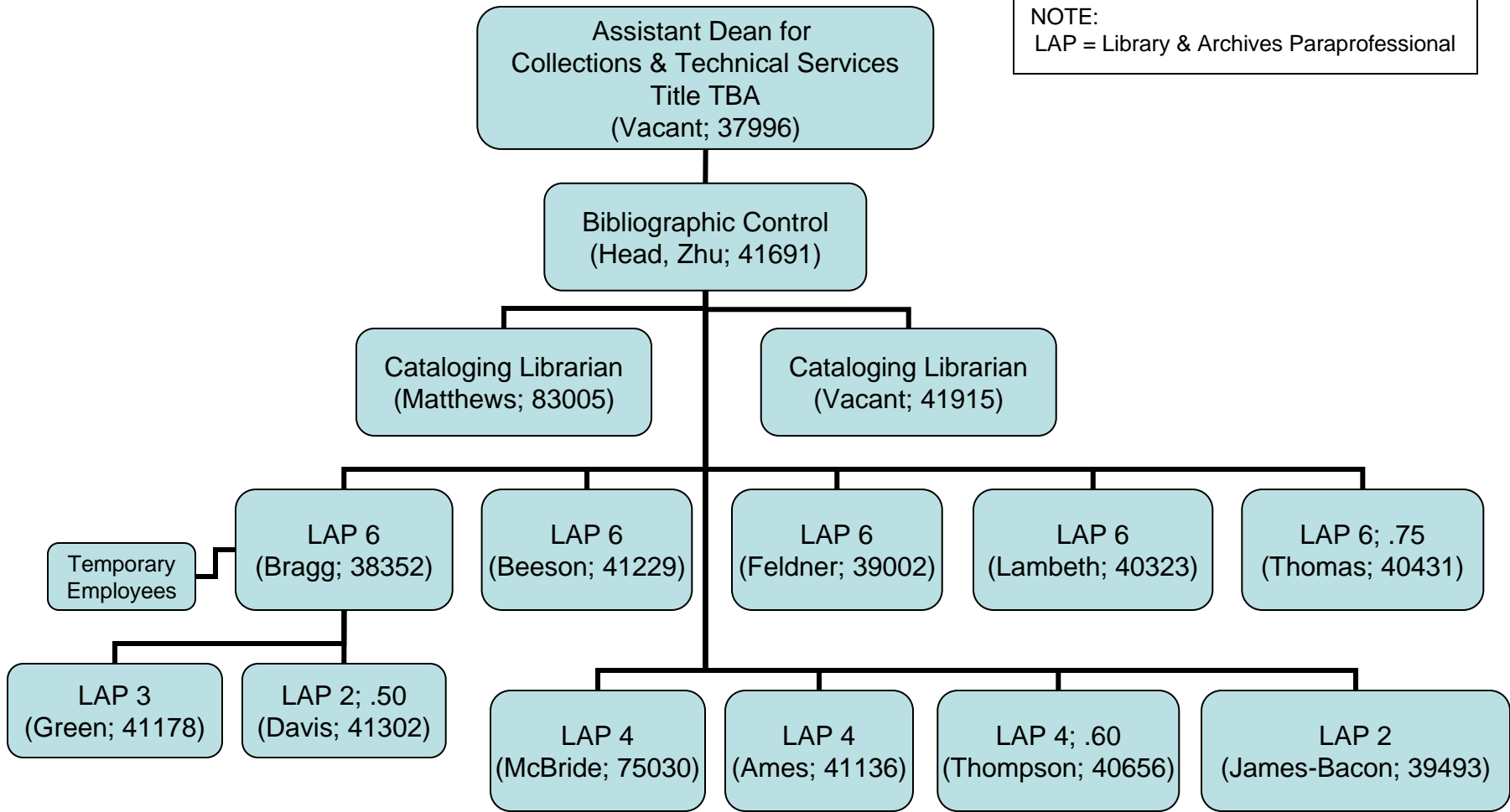
All Libraries

Organization Chart – July 1, 2007

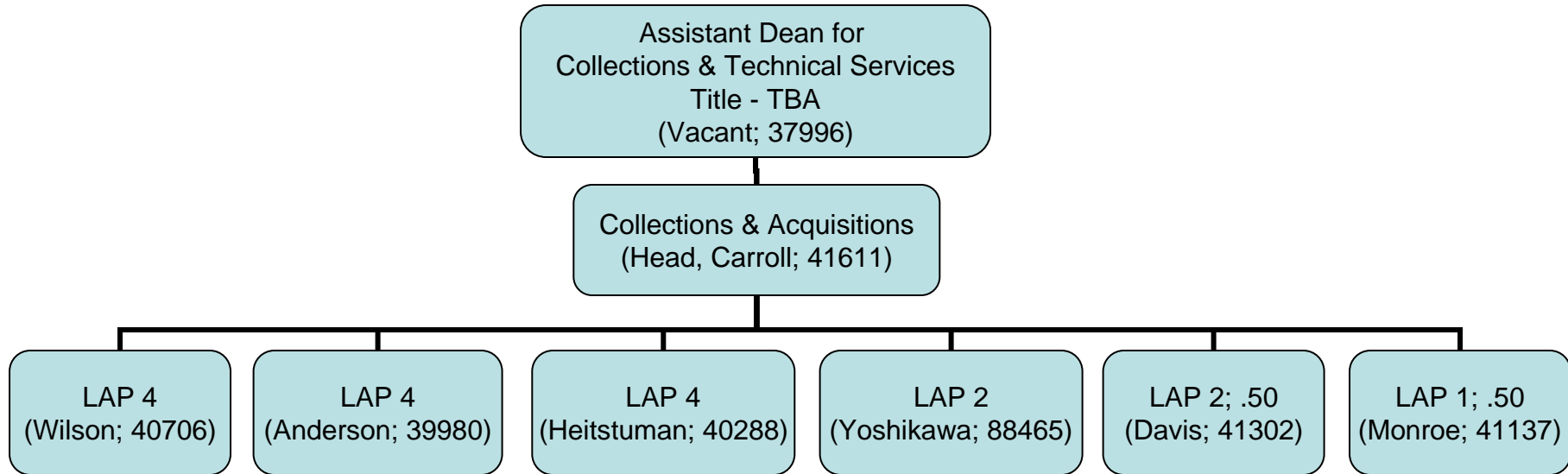


Washington State University Libraries Collections and Technical Services/Bibliographic Control Organization Chart – July 1, 2007

NOTE:
LAP = Library & Archives Paraprofessional



Washington State University Libraries
Collections & Technical Services/Collections & Acquisitions
Organization Chart – July 1, 2007



NOTE:
LAP = Library & Archives Paraprofessional

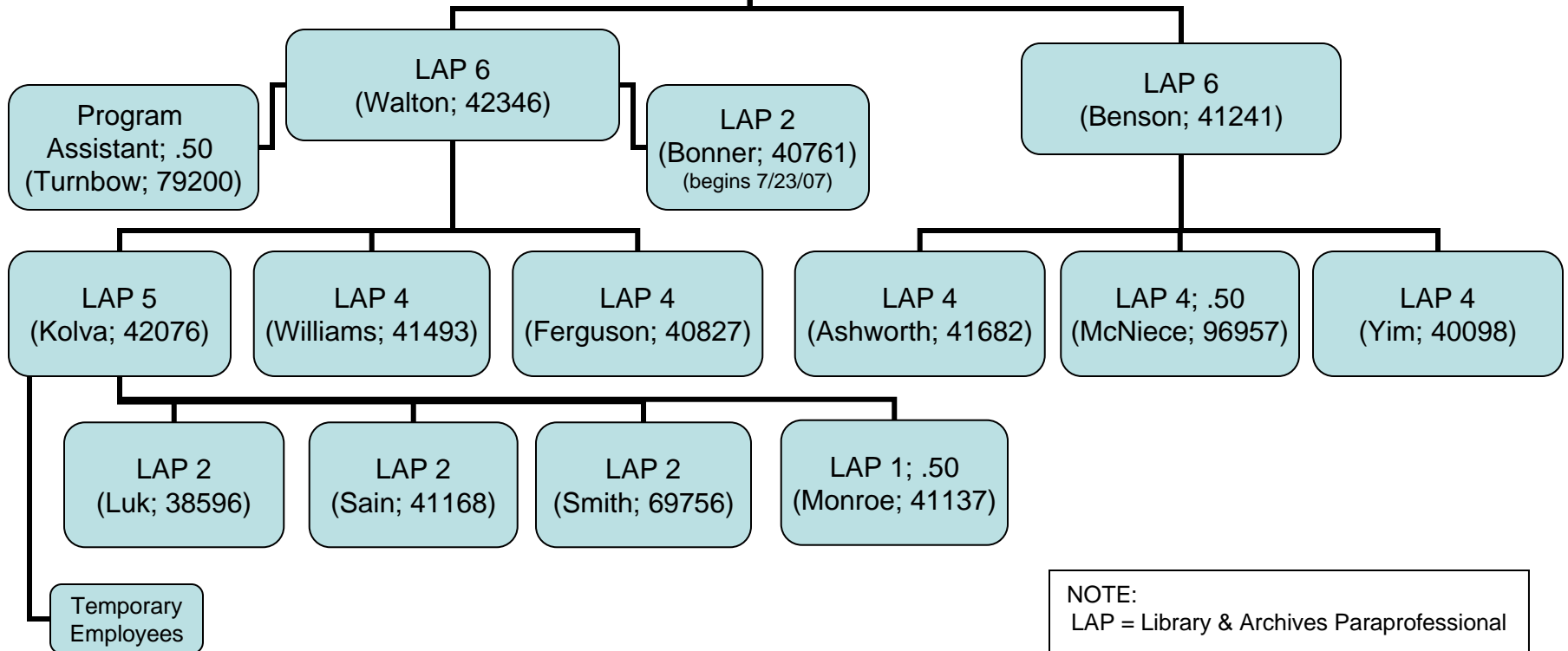
Washington State University Libraries

Collections & Technical Services/Serials & Electronic Resources

Organization Chart – July 1, 2007

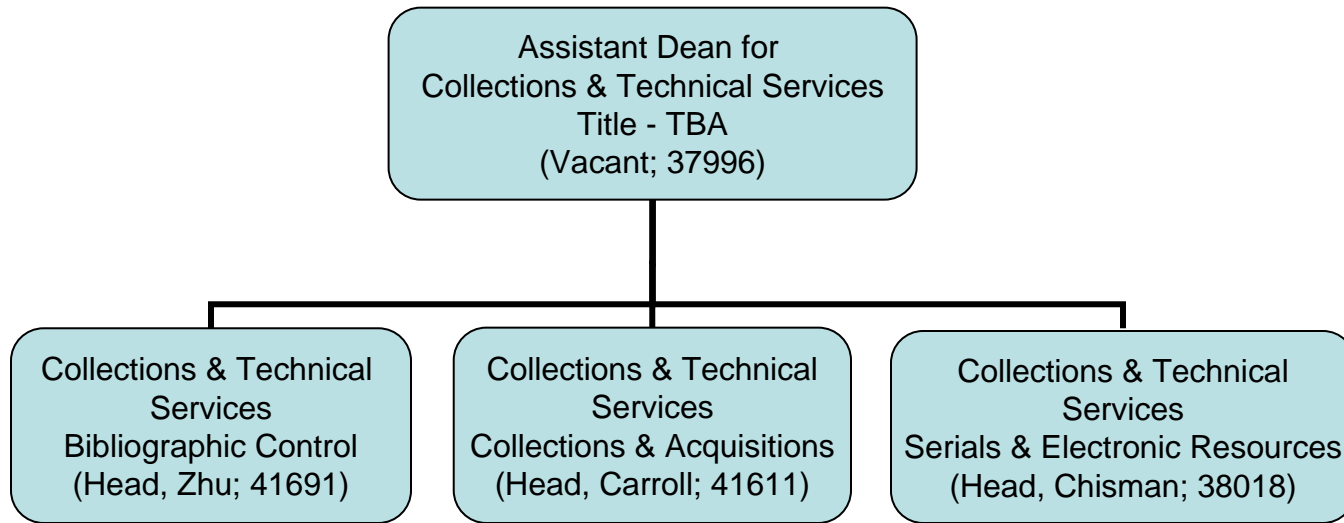
Assistant Dean for
Collections & Technical Services
Title - TBA
(Vacant; 37996)

Serials & Electronic
Resources
(Head, Chisman; 38018)

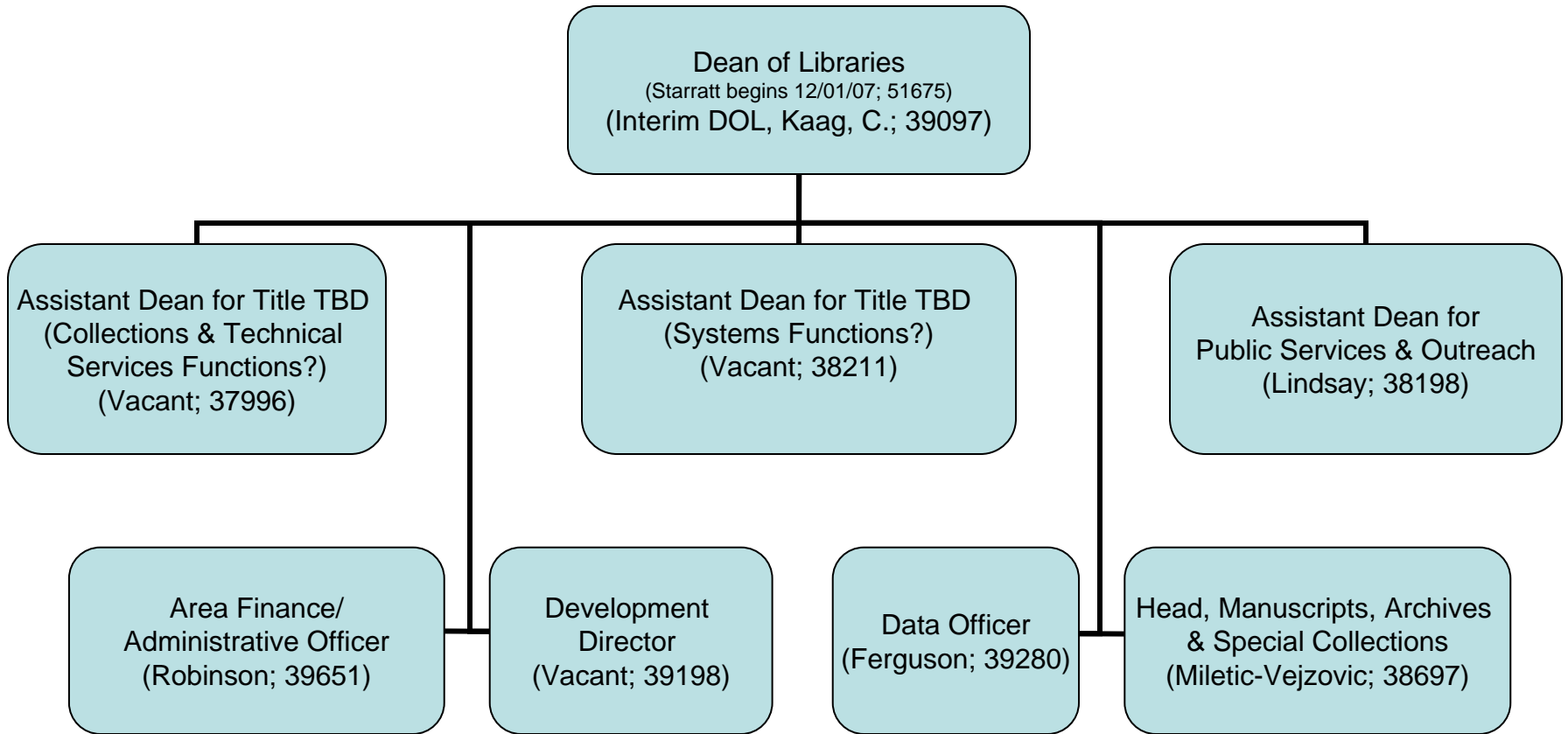


NOTE:
LAP = Library & Archives Paraprofessional

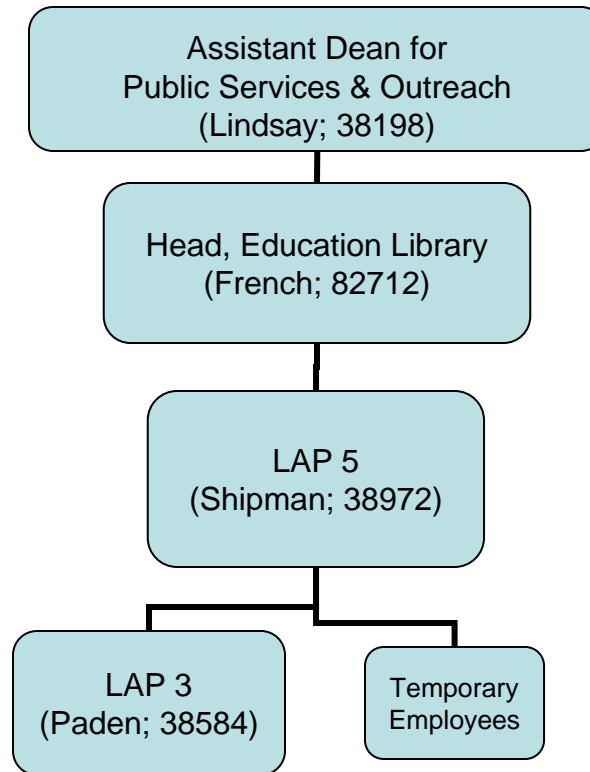
Washington State University Libraries
Collections and Technical Services
Organization Chart – July 1, 2007



Washington State University Libraries
Dean of Libraries
Organization Chart – July 1, 2007



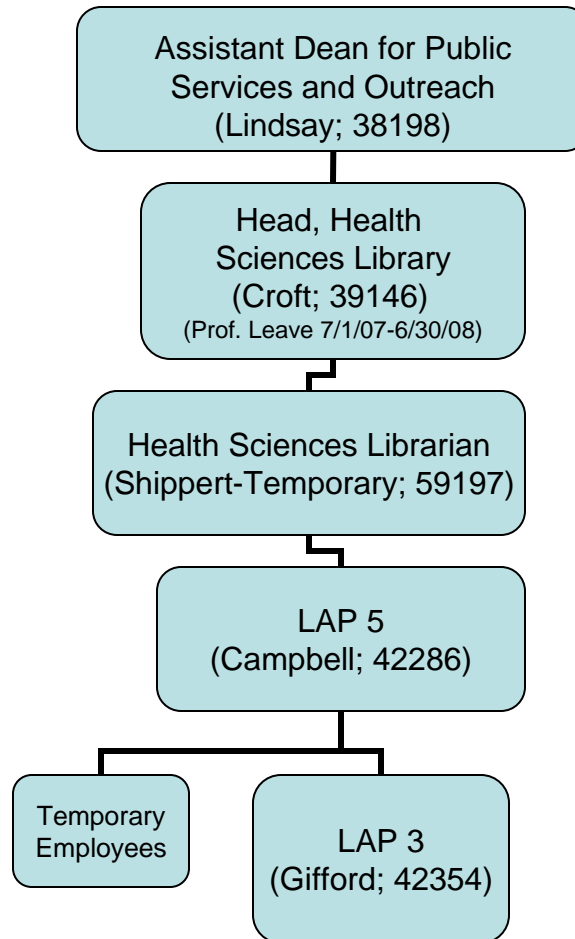
Washington State University Libraries Brain Education Library Organization Chart – July 1, 2007



NOTE:
LAP = Library & Archives Paraprofessional

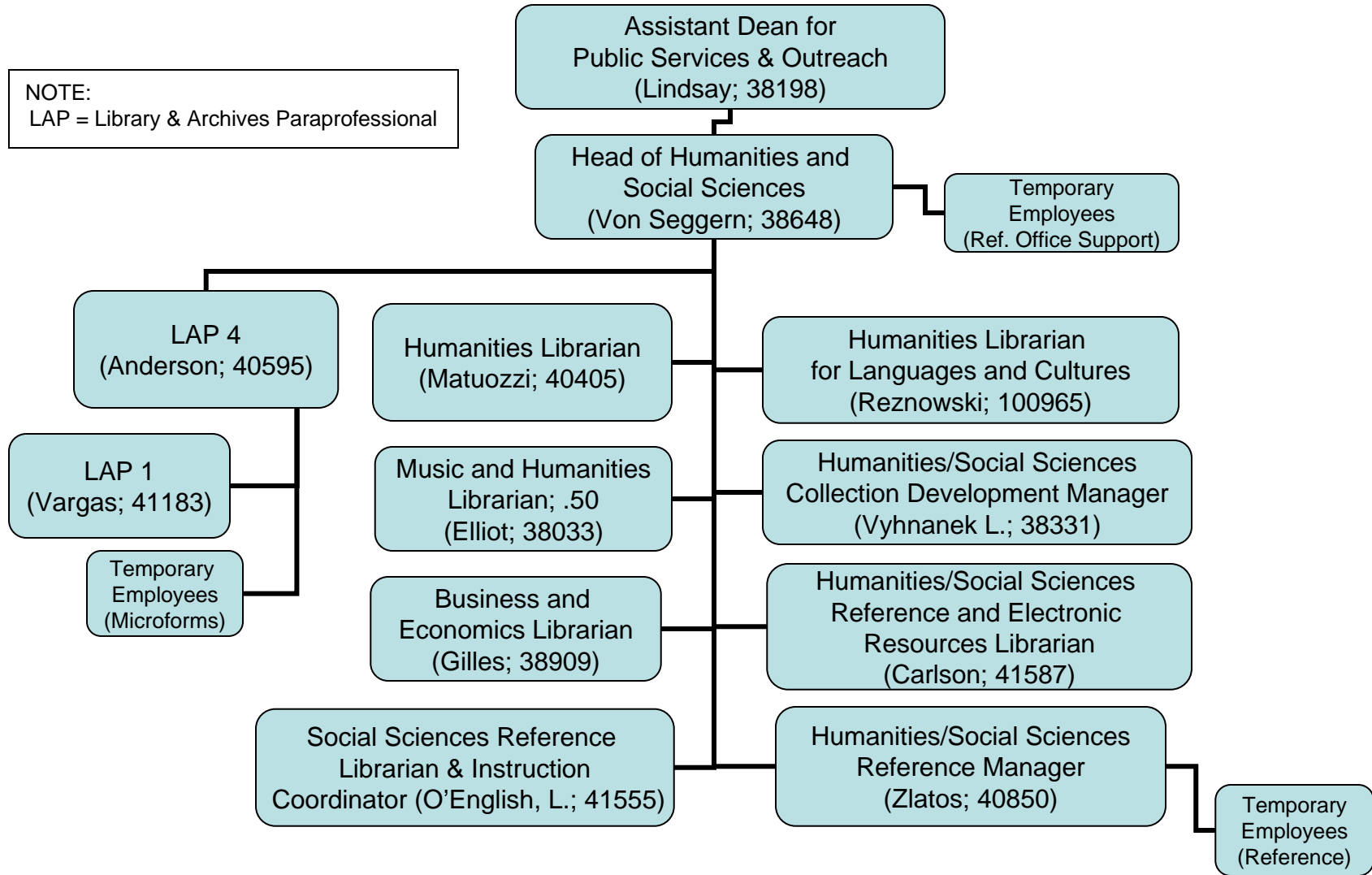
Washington State University Libraries Health Sciences Library Organization Chart – July 1, 2007

NOTE:
LAP = Library & Archives Paraprofessional

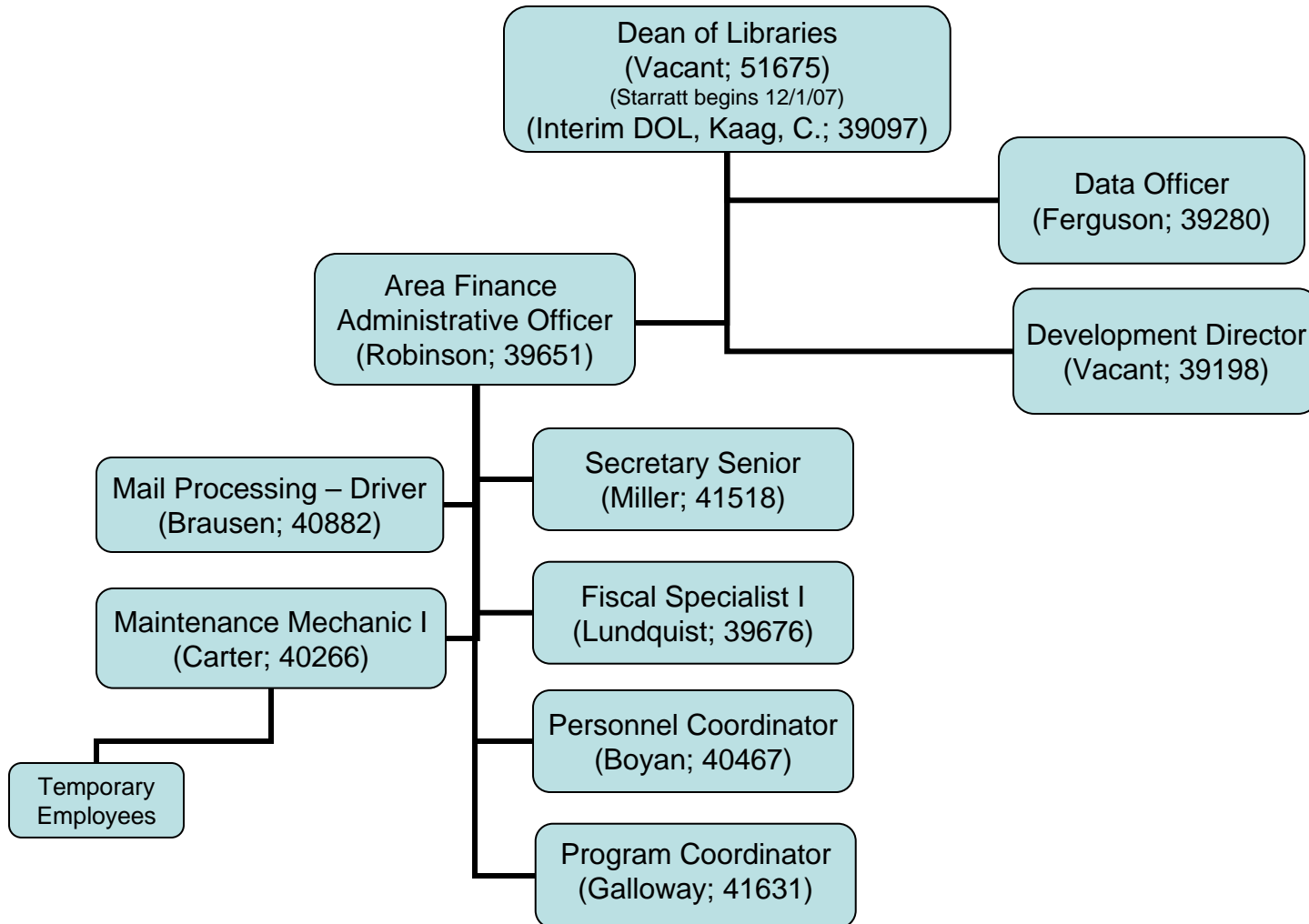


Washington State University Libraries Humanities and Social Sciences Libraries Organization Chart – July 1, 2007

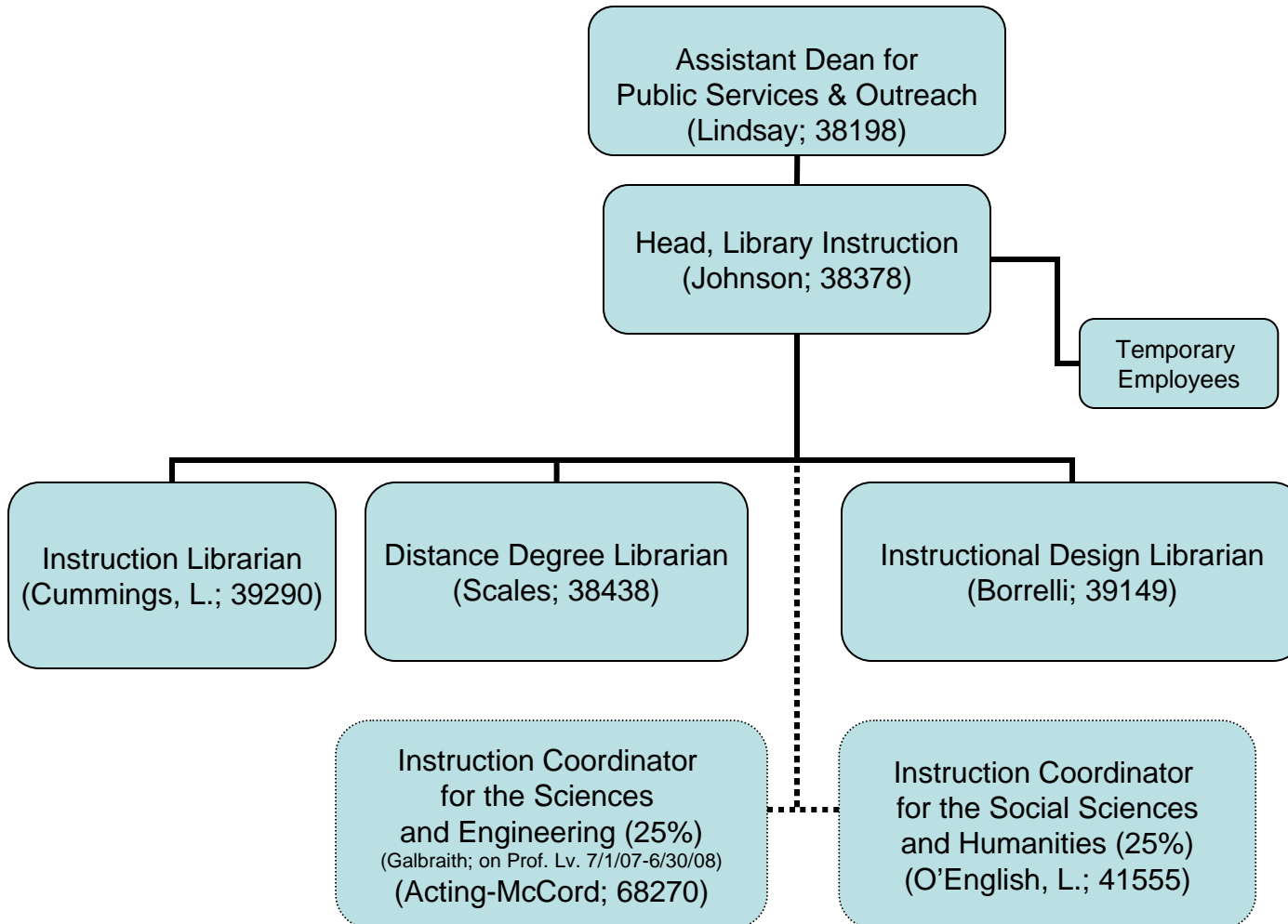
NOTE:
LAP = Library & Archives Paraprofessional



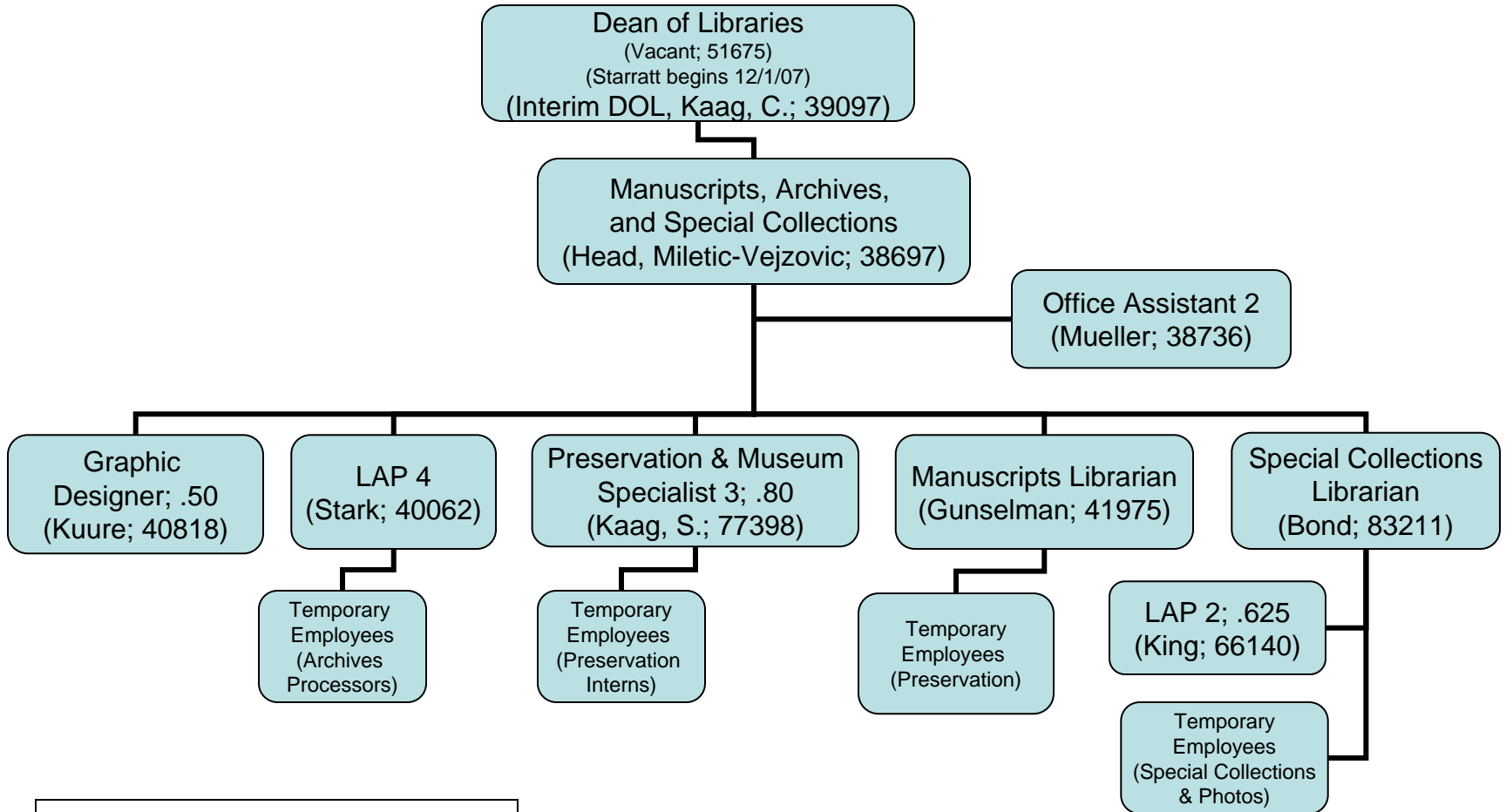
Washington State University Libraries
Library Administrative Office
Organization Chart – July 1, 2007



Washington State University Libraries
Library Instruction
Organization Chart – July 1, 2007



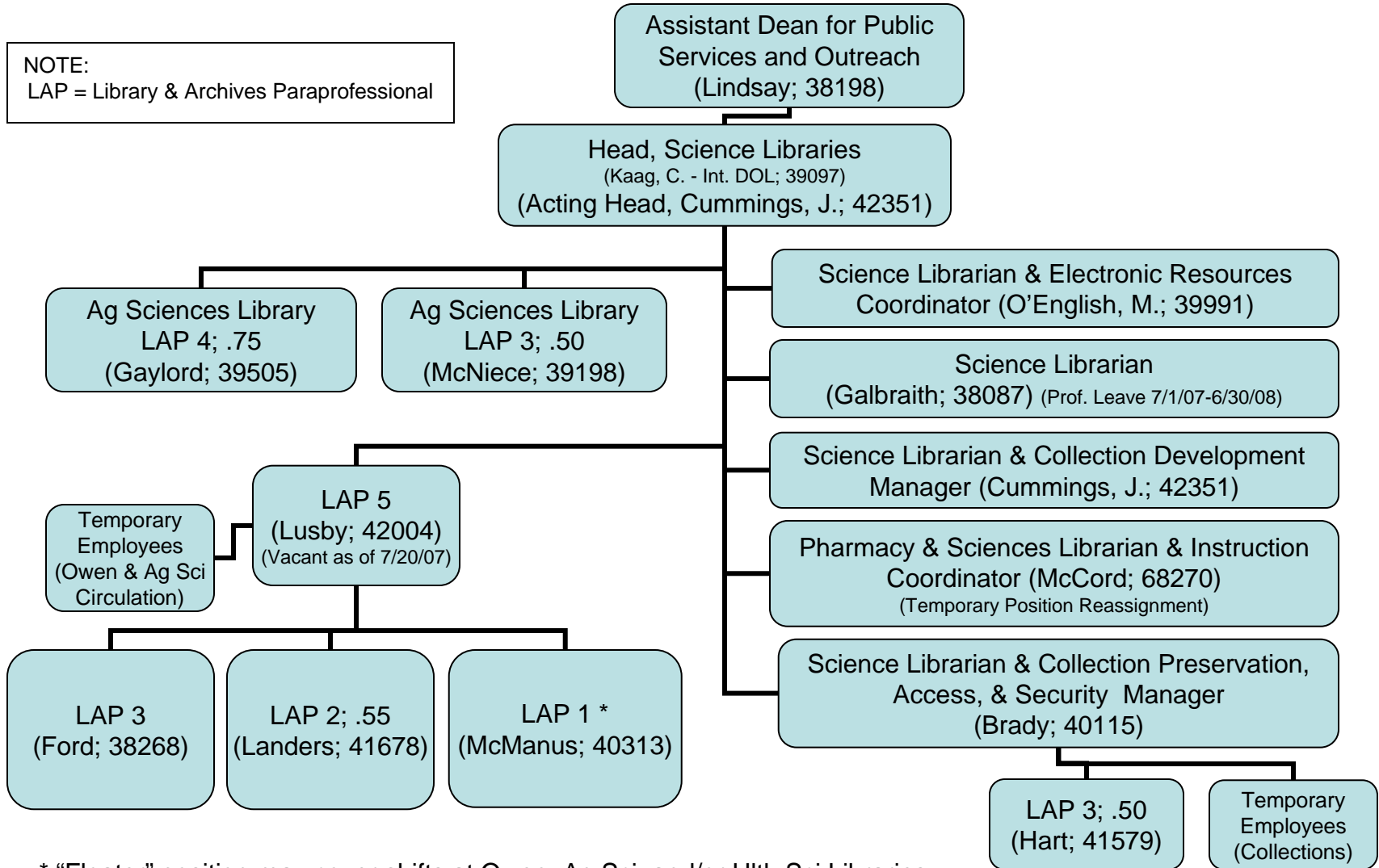
Washington State University Libraries Manuscripts, Archives and Special Collections Organization Chart – July 1, 2007



NOTE:
LAP = Library & Archives Paraprofessional

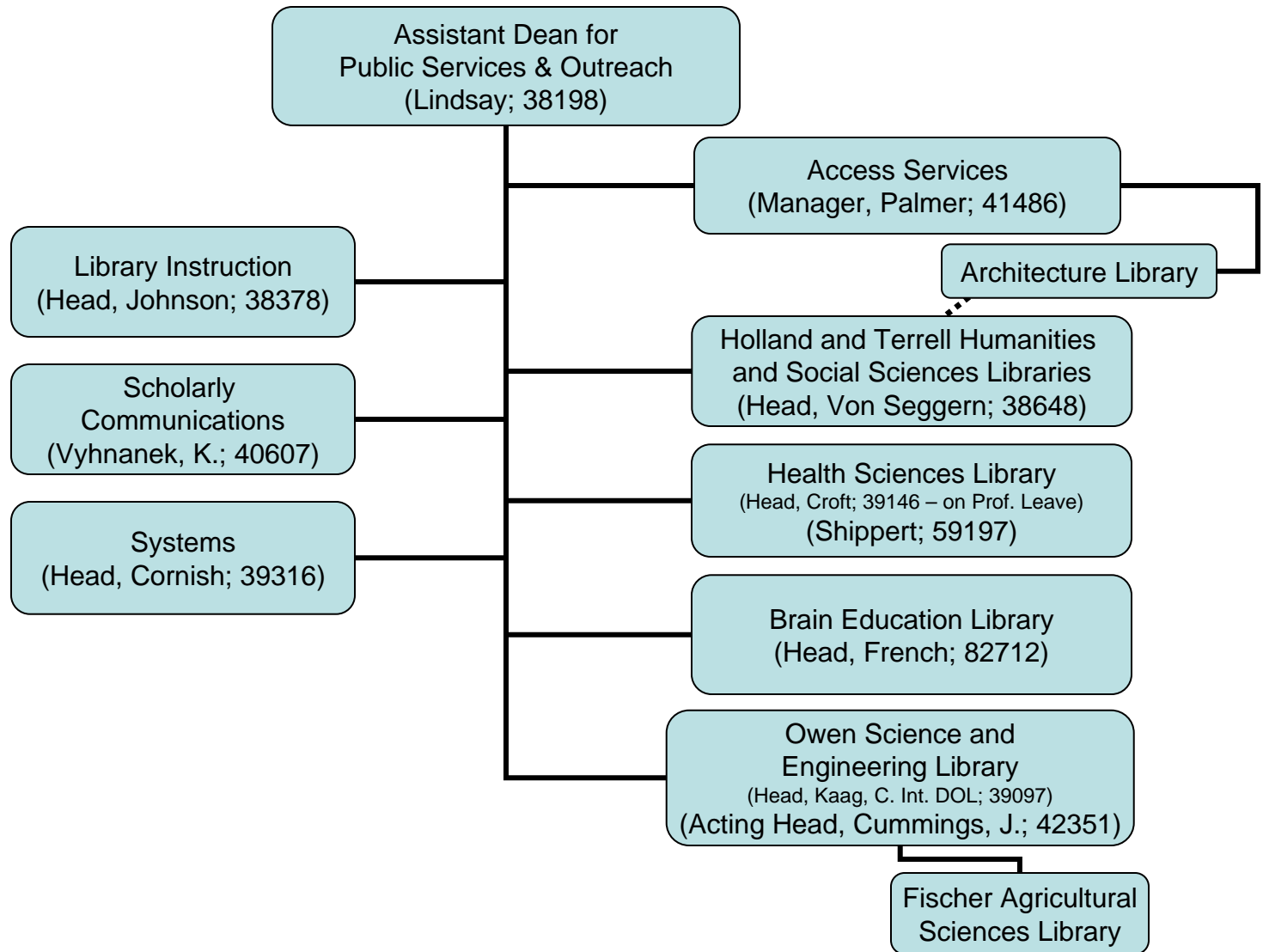
Washington State University Libraries Owen Science & Engineering Library (includes Fischer Agricultural Sciences Library) Organization Chart – July 1, 2007

NOTE:
LAP = Library & Archives Paraprofessional



* "Floater" position-may cover shifts at Owen, Ag Sci, and/or Hlth Sci Libraries.

Washington State University Libraries Public Services and Outreach Organization Chart – July 1, 2007



Washington State University Libraries Systems Organization Chart – July 1, 2007

