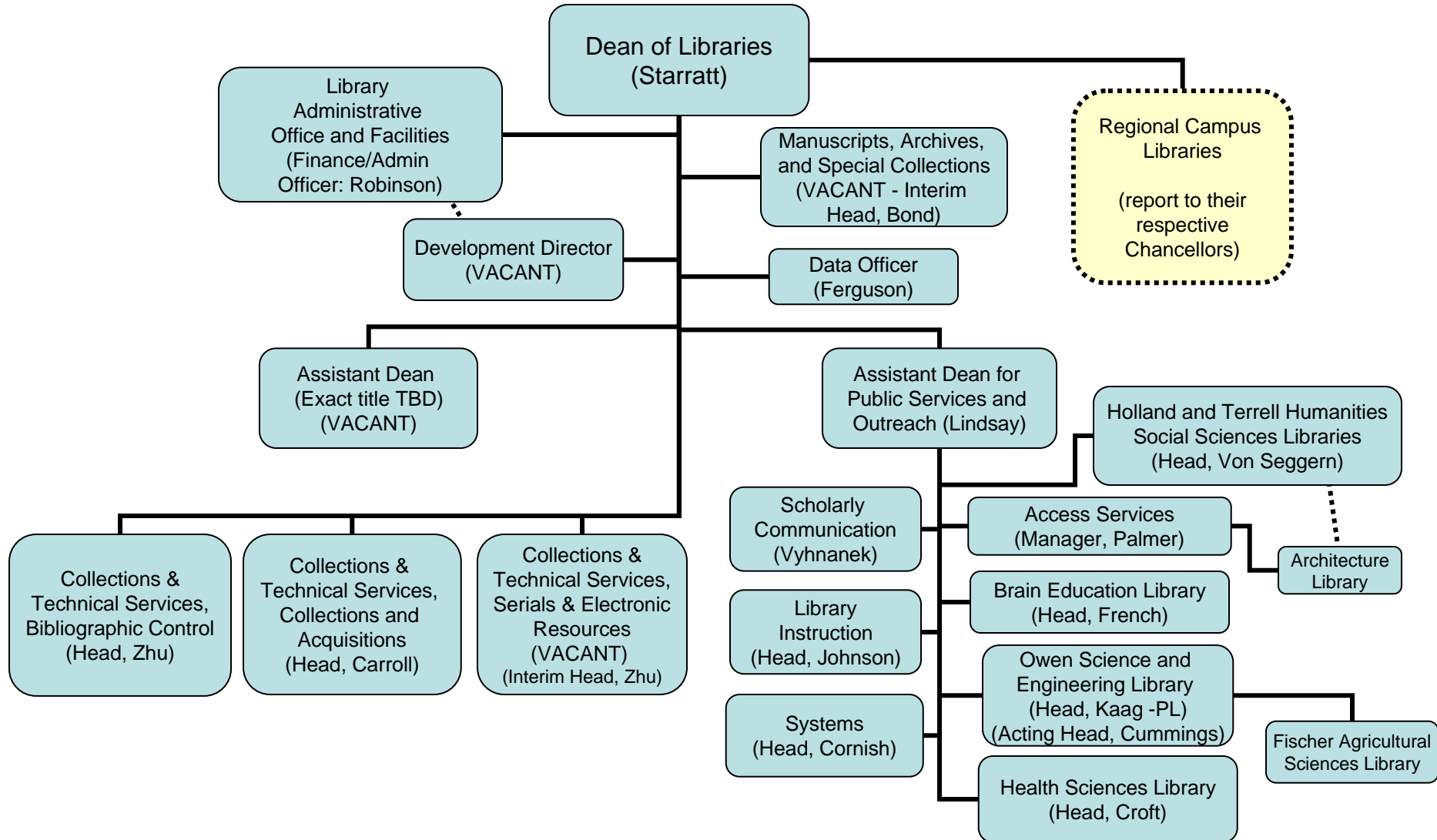


Washington State University Libraries

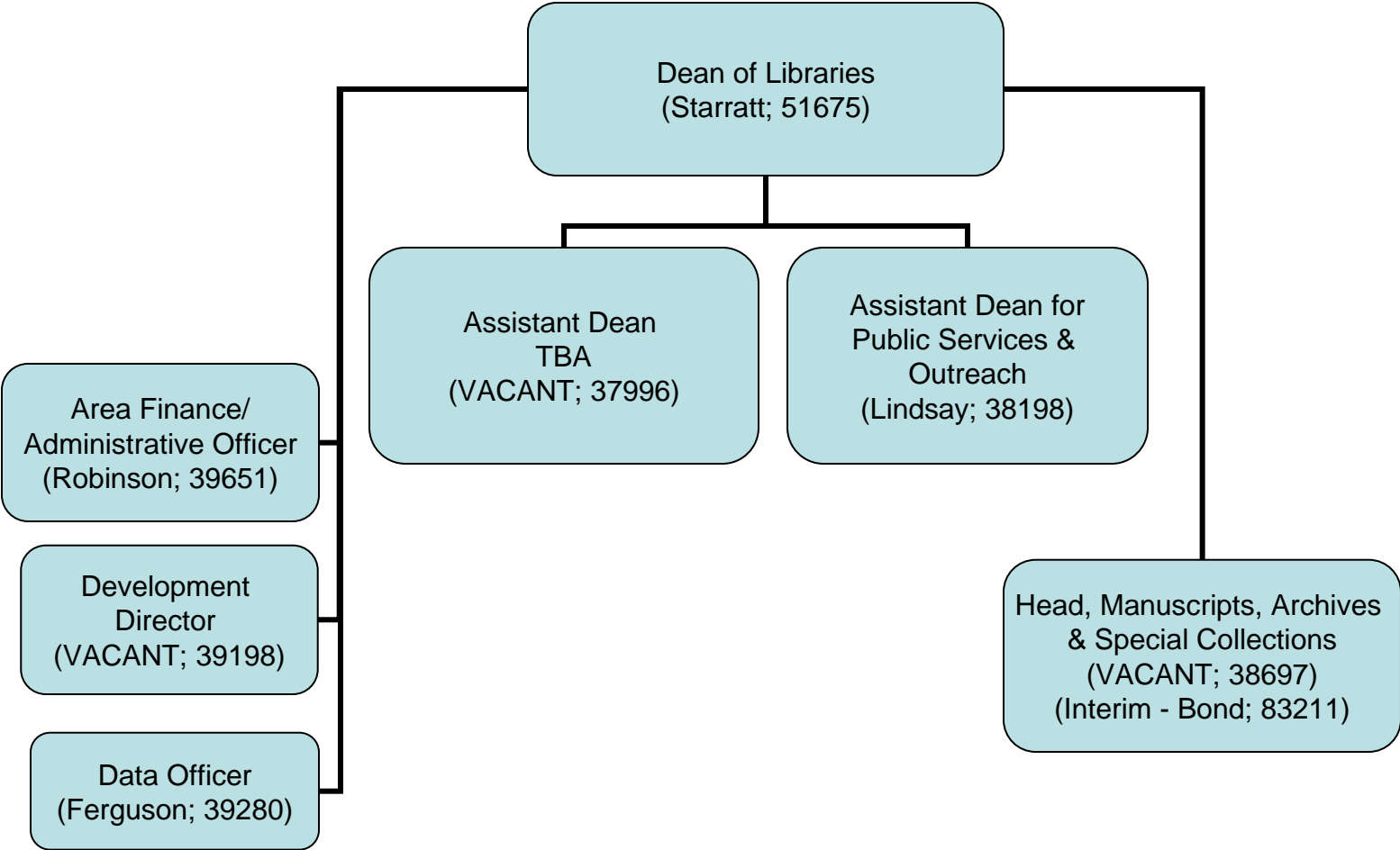
All Libraries

Organization Chart – September 1, 2008



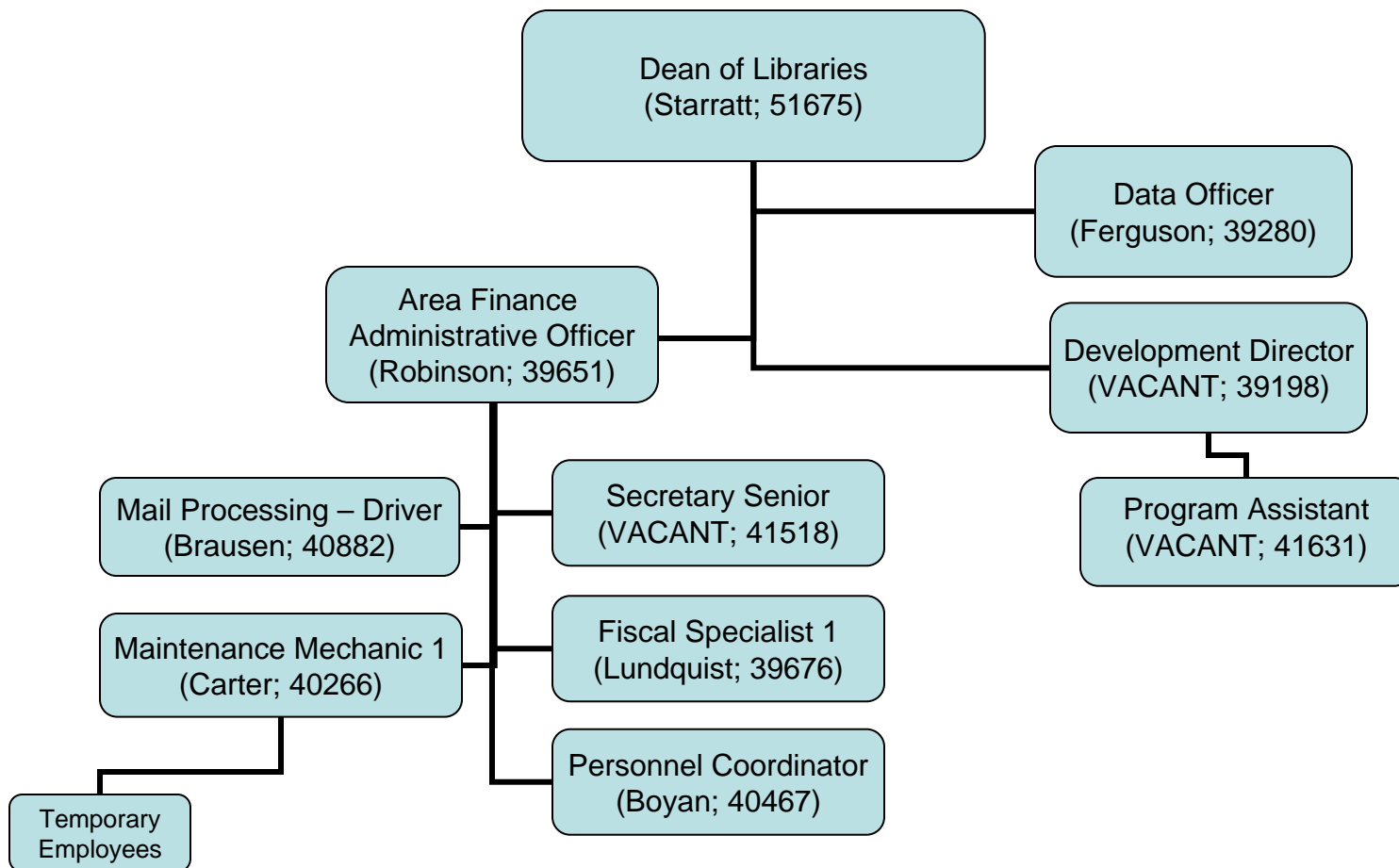
Washington State University Libraries
Dean of Libraries
Organization Chart – September 1, 2008

[Back to All Libraries](#)



Washington State University Libraries
Library Administrative Office
Organization Chart – September 1, 2008

[Back to
All Libraries](#)



Washington State University Libraries Manuscripts, Archives and Special Collections Organization Chart – September 1, 2008

[Back to All Libraries](#)

NOTE:
LAP = Library & Archives Paraprofessional

Dean of Libraries
(Starratt; 51675)

Manuscripts, Archives,
and Special Collections
(Head, VACANT; 38697)
(Interim Head, Bond; 83211)

Office Assistant 2
(Mueller; 38736)

LAP 4
(VACANT; 40062)

Graphic Designer; .50
(Kuure; 40818)

Preservation & Museum
Specialist 3; .80
(Jouas; 77398)

Temporary
Employees
(Preservation
Interns)

University Archivist
(O'English, M.; 39991)

Temporary
Employees
(Archives)

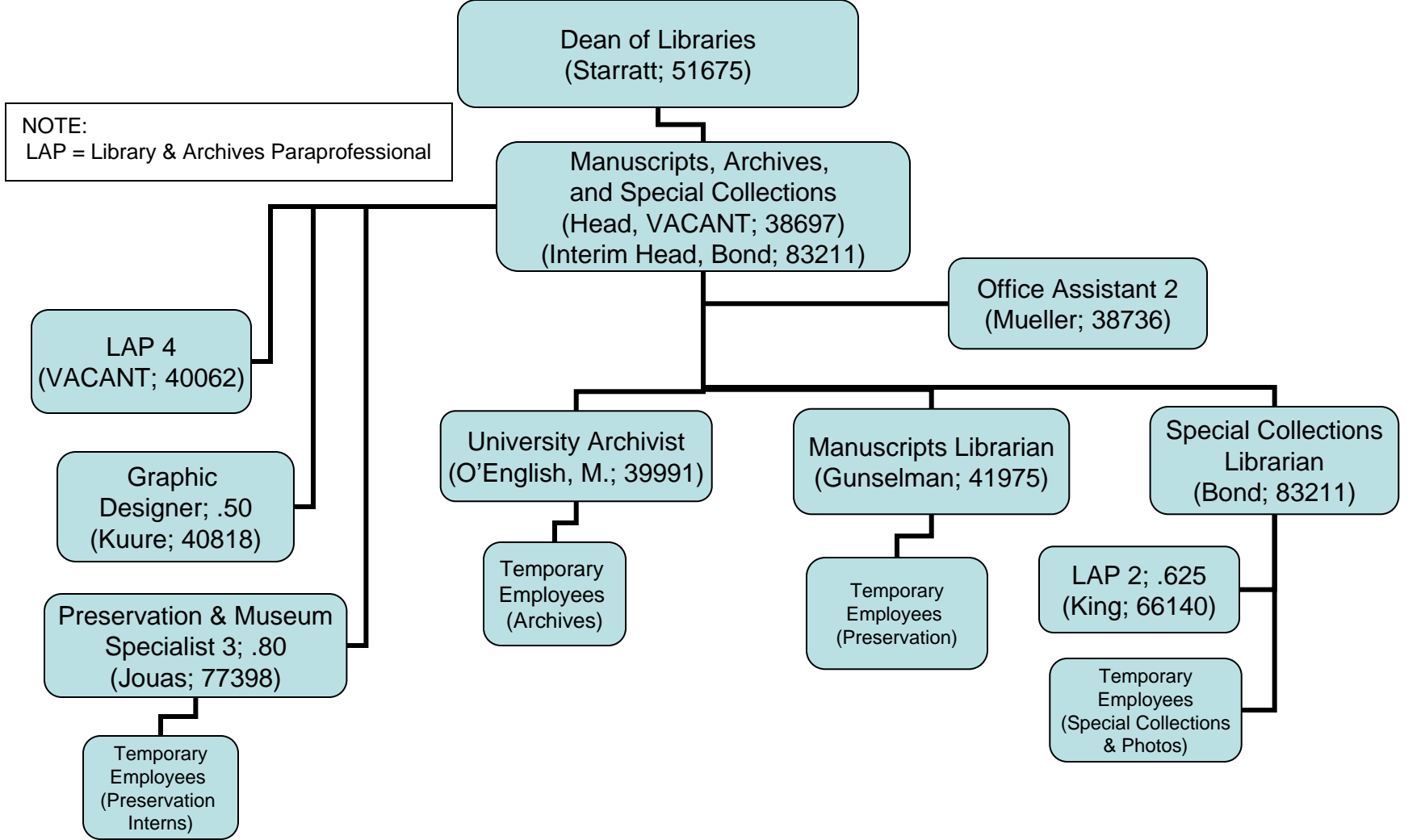
Manuscripts Librarian
(Gunselman; 41975)

Temporary
Employees
(Preservation)

Special Collections
Librarian
(Bond; 83211)

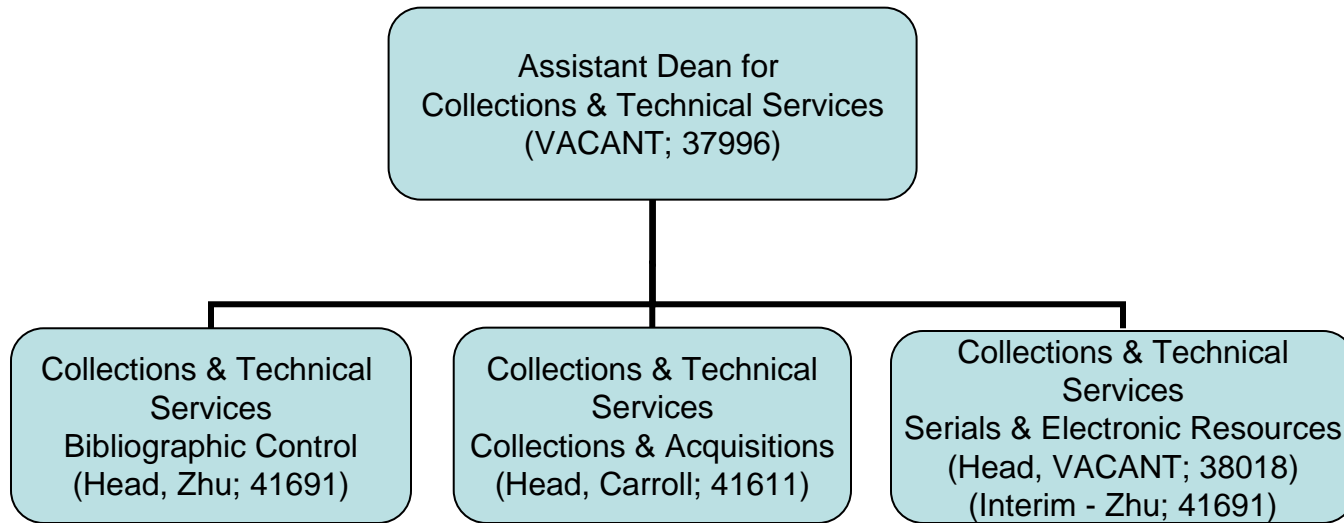
LAP 2; .625
(King; 66140)

Temporary
Employees
(Special Collections
& Photos)



Washington State University Libraries Collections and Technical Services Organization Chart – September 1, 2008

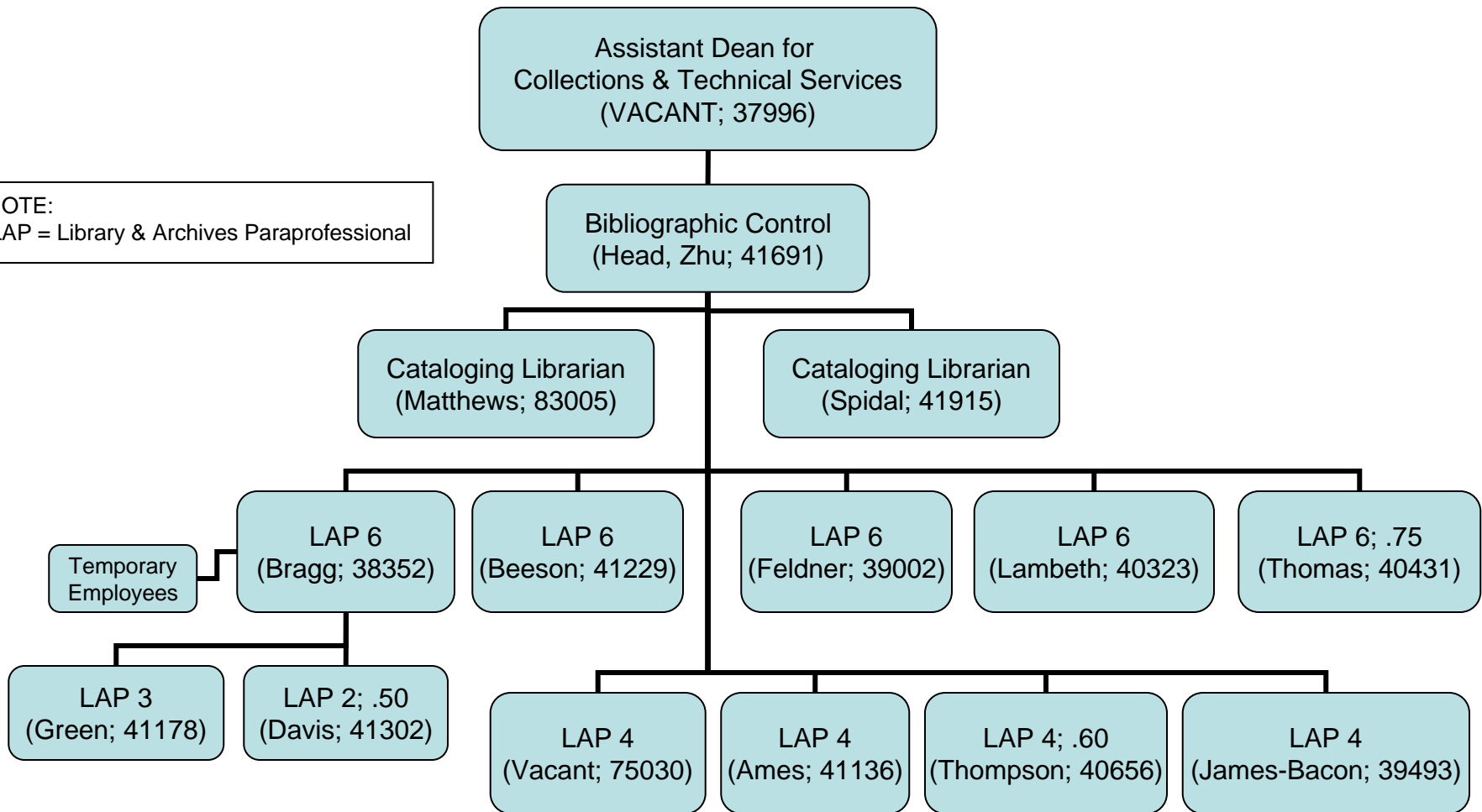
[Back to
All Libraries](#)



Washington State University Libraries Collections and Technical Services Bibliographic Control Organization Chart – September 1, 2008

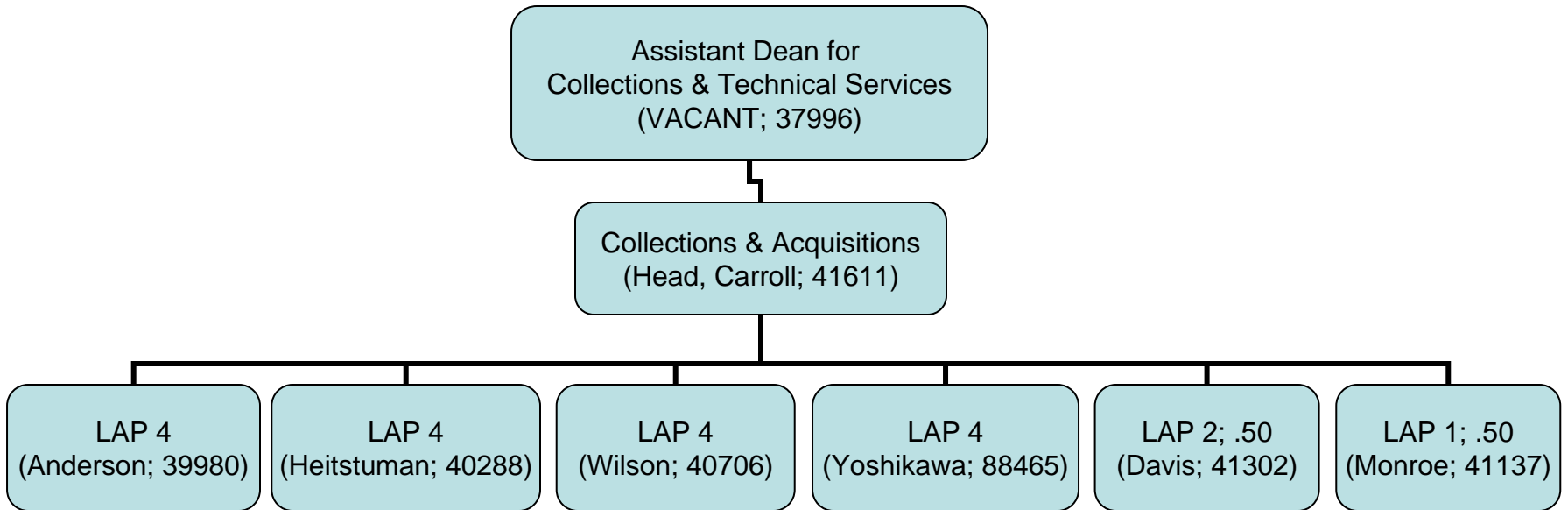
[Back to
All Libraries](#)

NOTE:
LAP = Library & Archives Paraprofessional



Washington State University Libraries
Collections & Technical Services
Collections & Acquisitions
Organization Chart – September 1, 2008

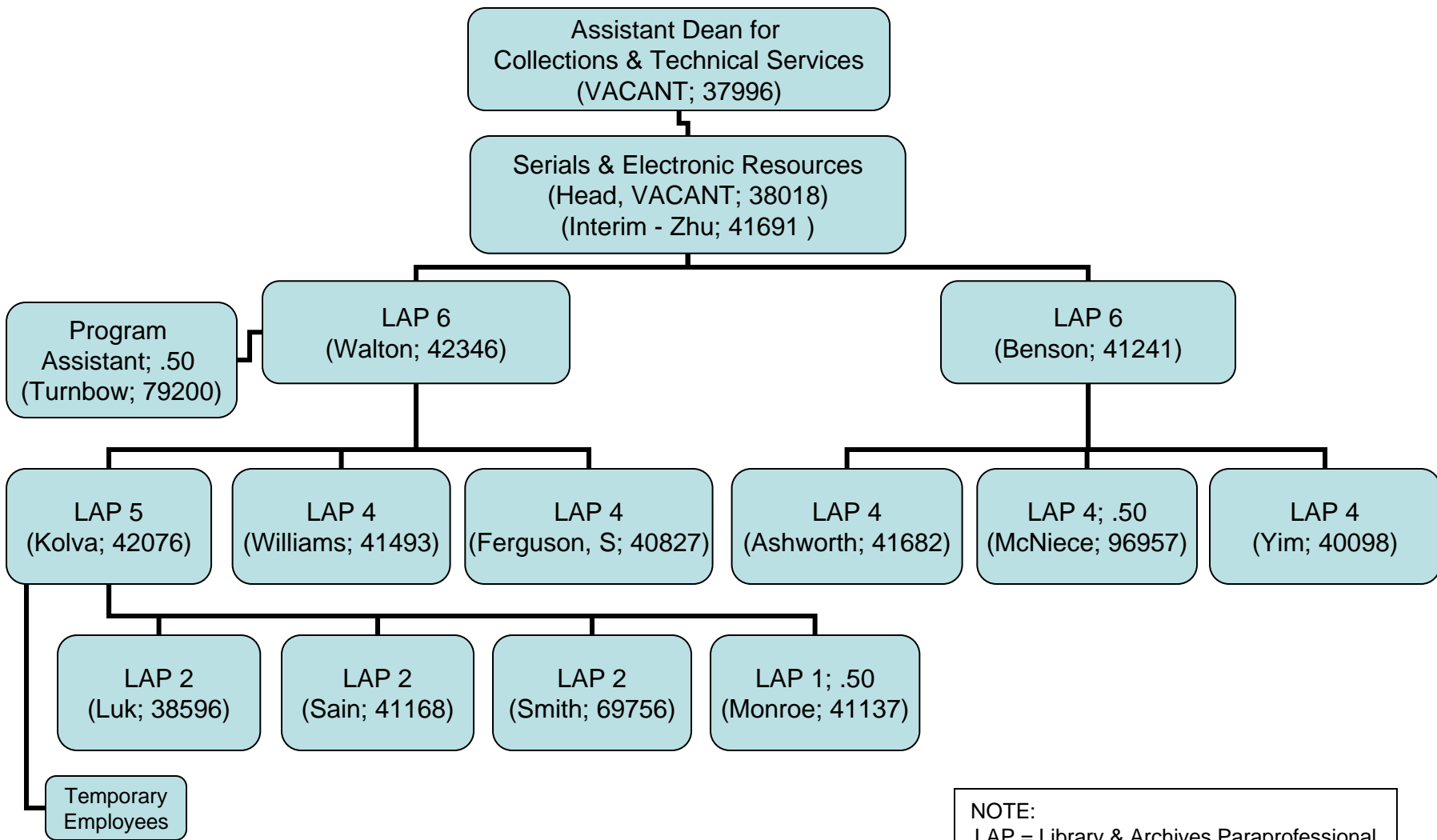
[Back to All Libraries](#)



NOTE:
LAP = Library & Archives Paraprofessional

Washington State University Libraries
 Collections & Technical Services
 Serials & Electronic Resources
 Organization Chart – September 1, 2008

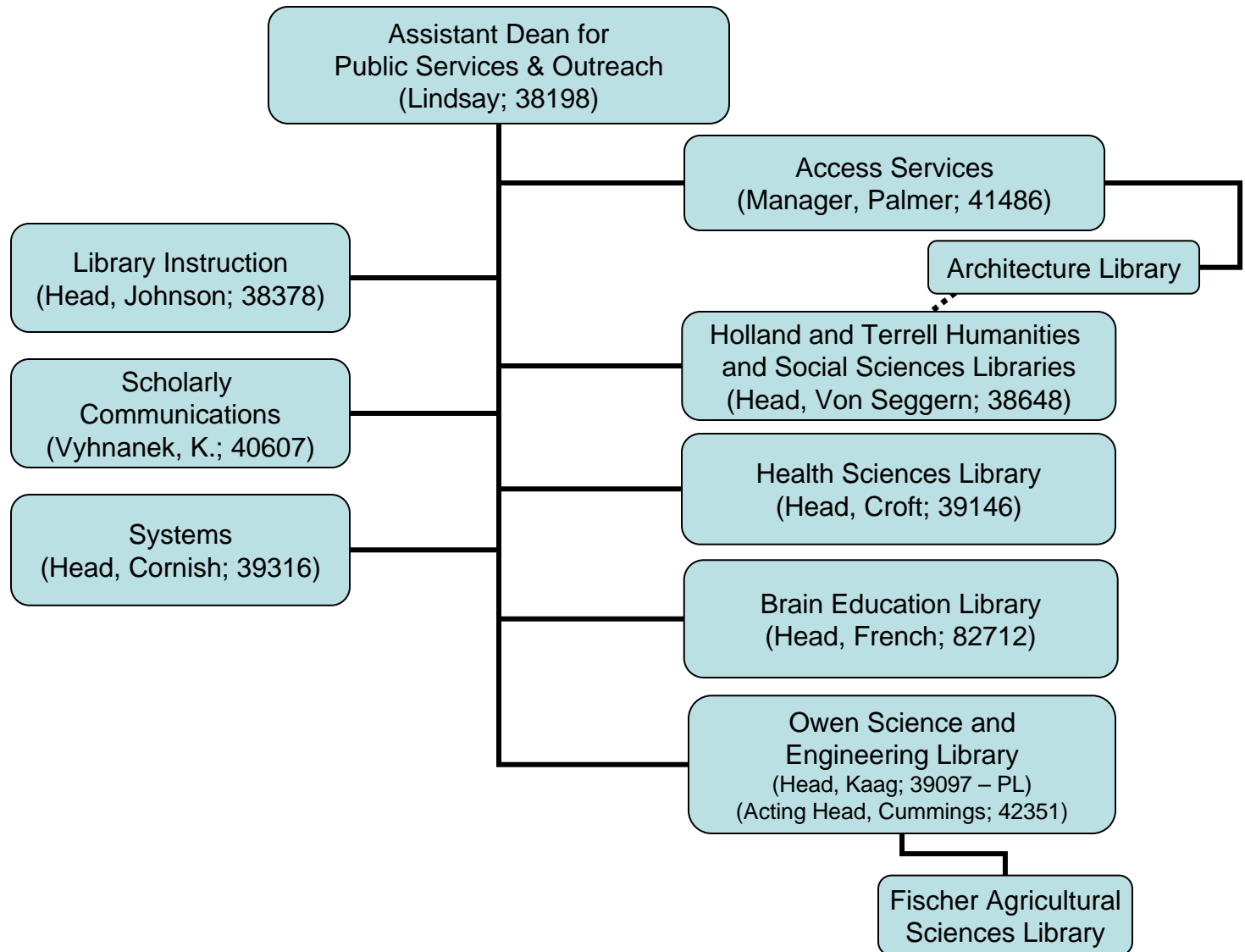
[Back to All Libraries](#)



NOTE:
 LAP = Library & Archives Paraprofessional

Washington State University Libraries Public Services and Outreach Organization Chart – September 1, 2008

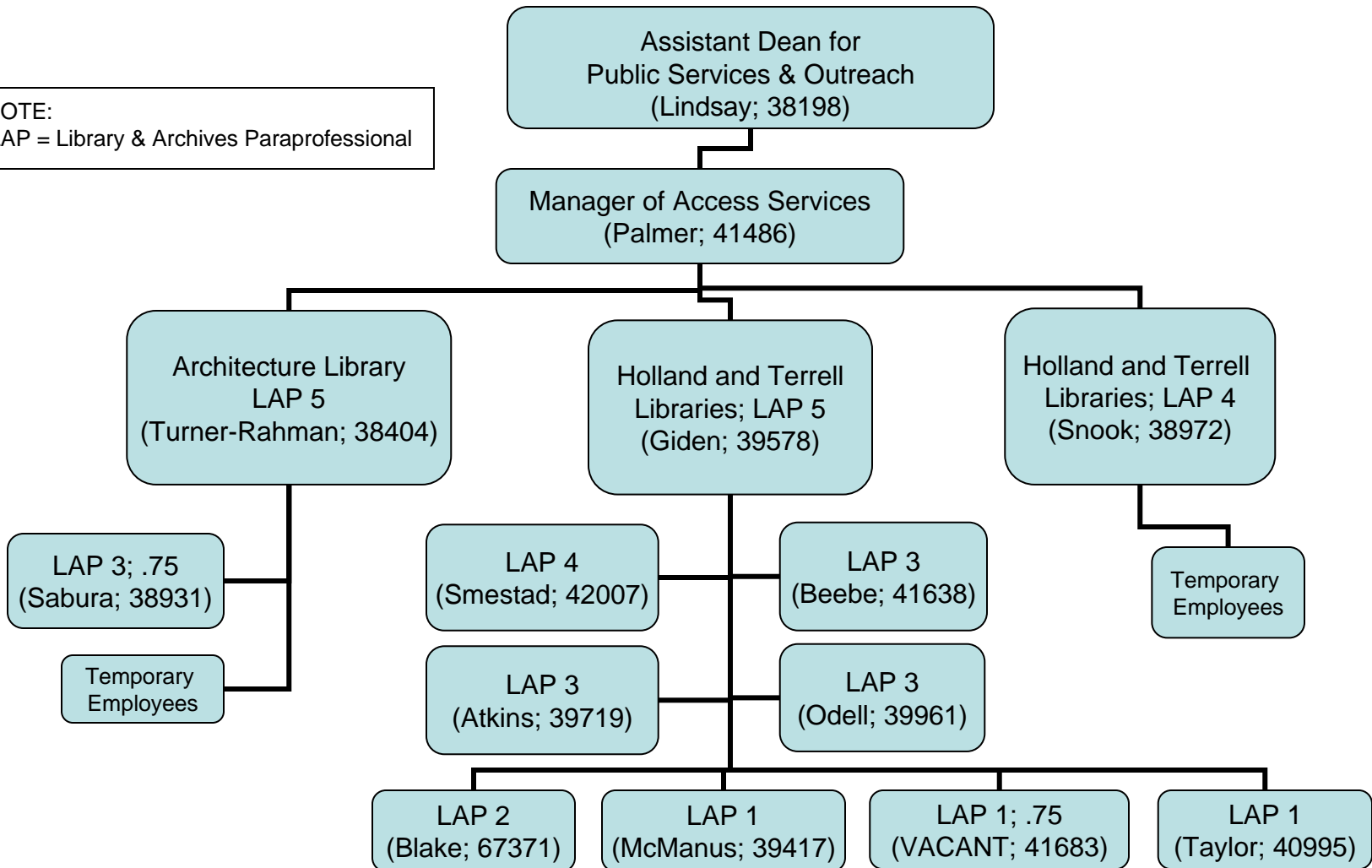
[Back to All Libraries](#)



Washington State University Libraries Access Services (including the Architecture Library) Organization Chart – September 1, 2008

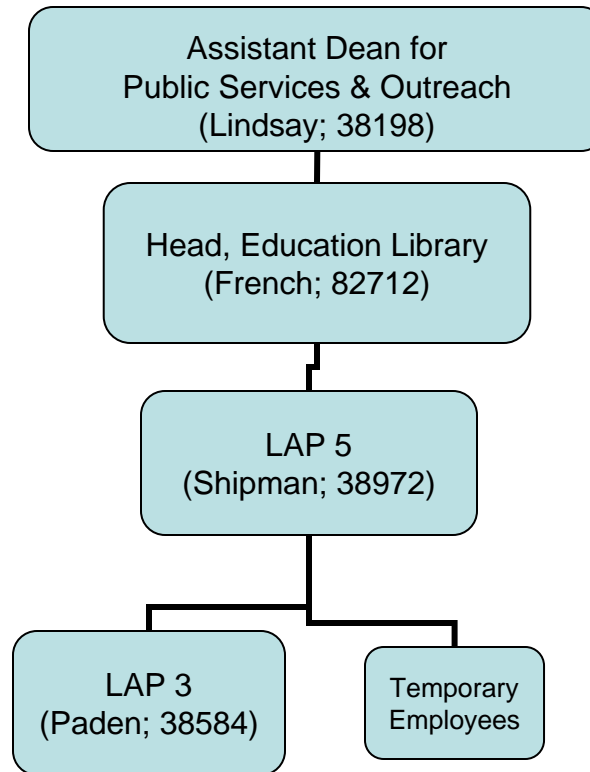
[Back to All Libraries](#)

NOTE:
LAP = Library & Archives Paraprofessional



Washington State University Libraries Brain Education Library Organization Chart – September 1, 2008

[Back to
All Libraries](#)

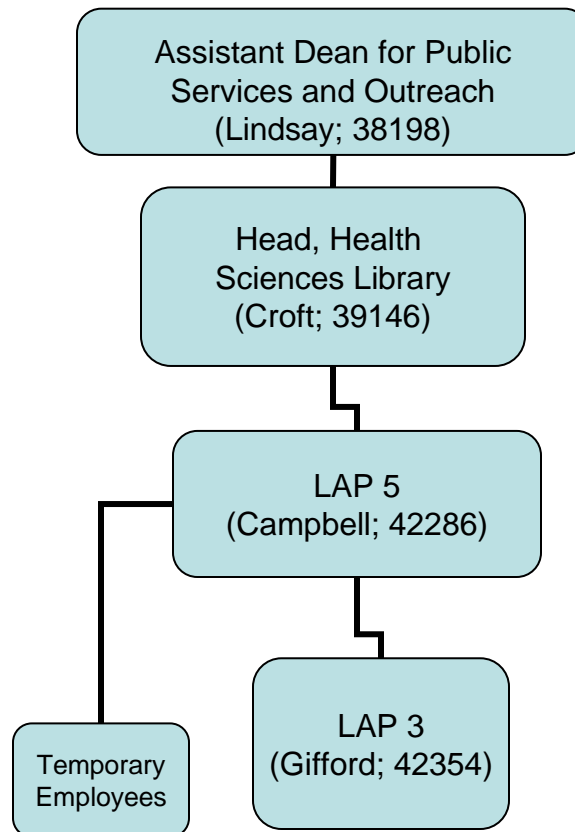


NOTE:
LAP = Library & Archives Paraprofessional

Washington State University Libraries Health Sciences Library Organization Chart – September 1, 2008

[Back to
All Libraries](#)

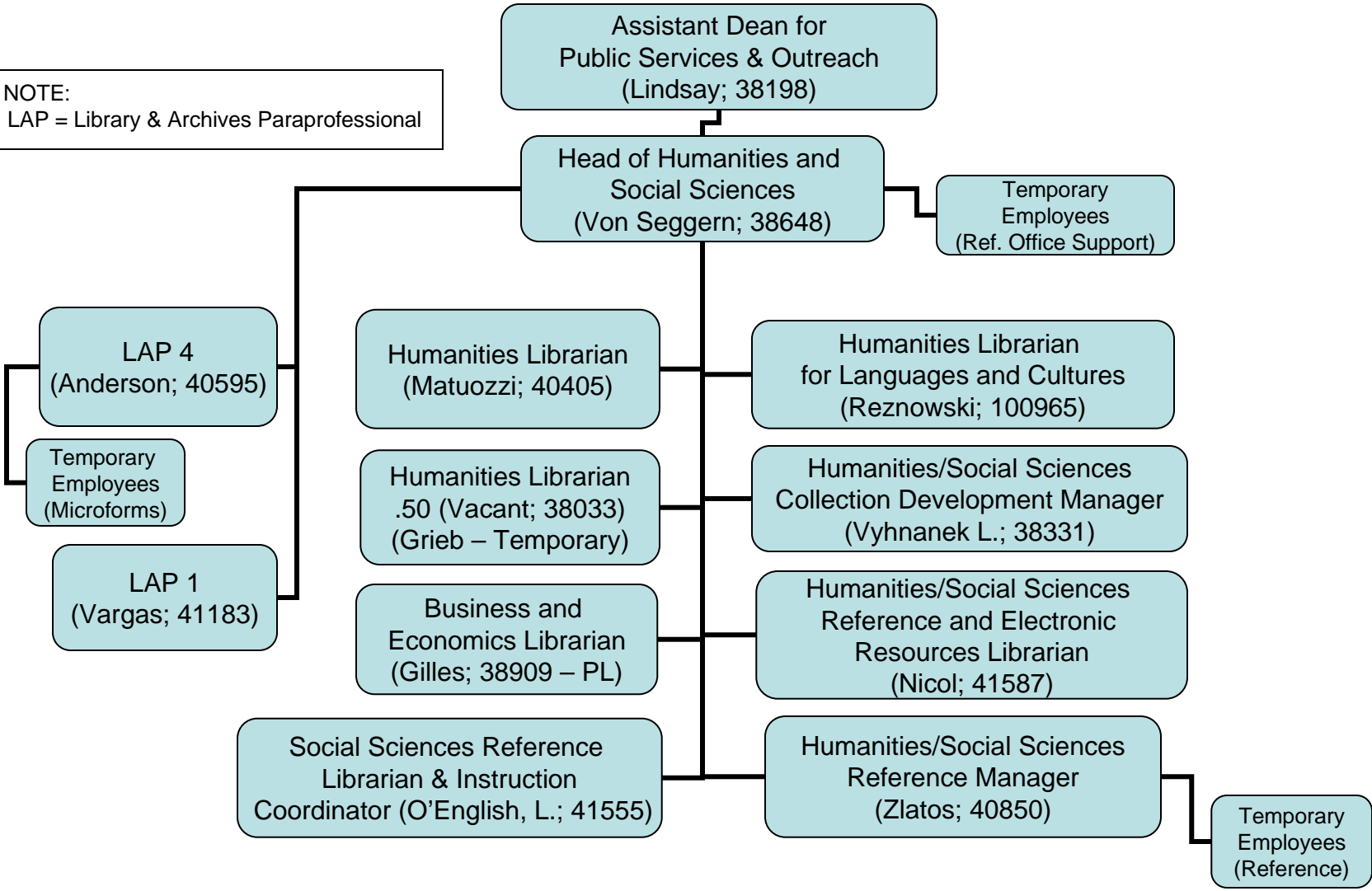
NOTE:
LAP = Library & Archives Paraprofessional



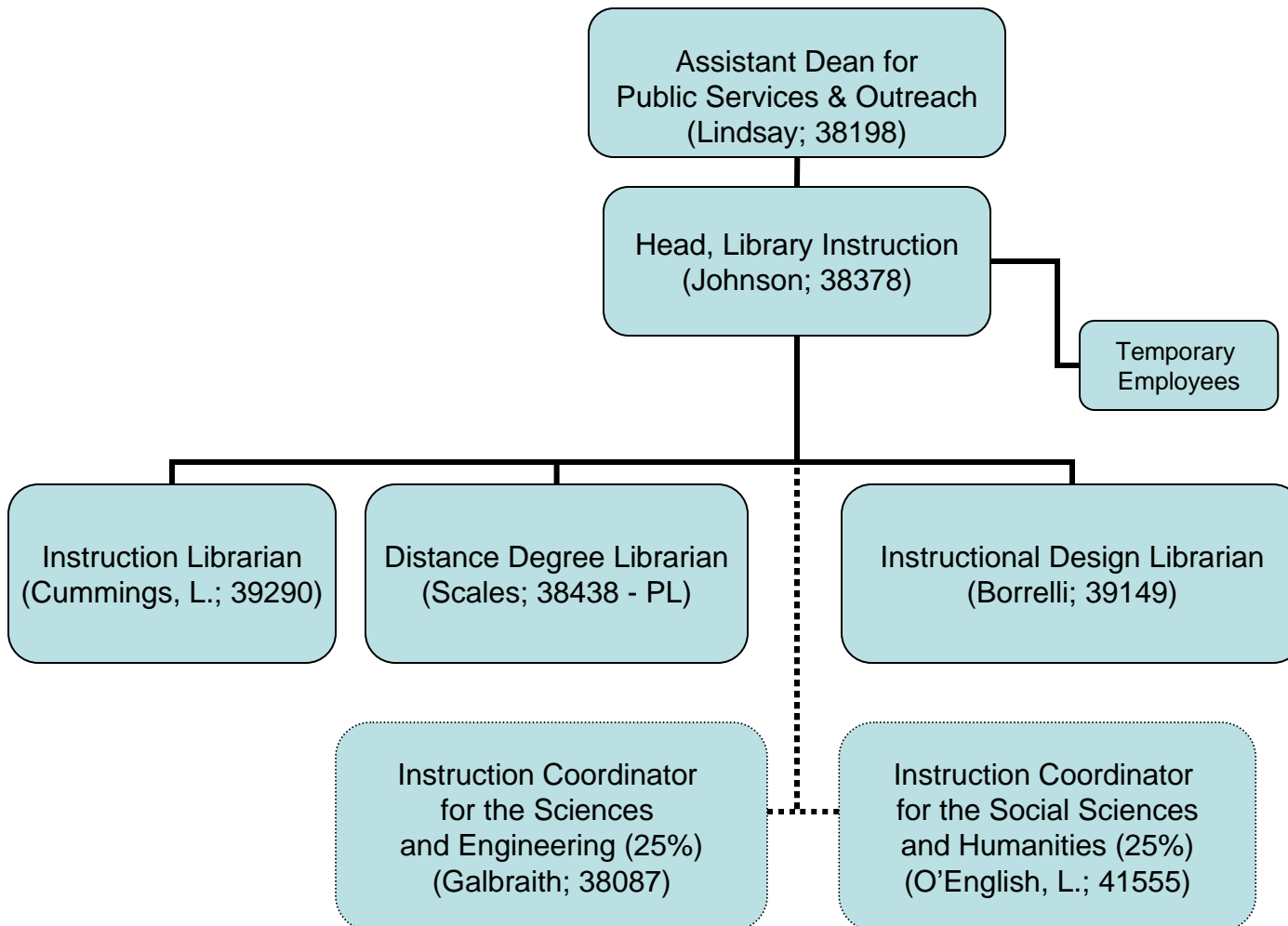
Washington State University Libraries Humanities and Social Sciences Libraries Organization Chart – September 1, 2008

[Back to All Libraries](#)

NOTE:
LAP = Library & Archives Paraprofessional



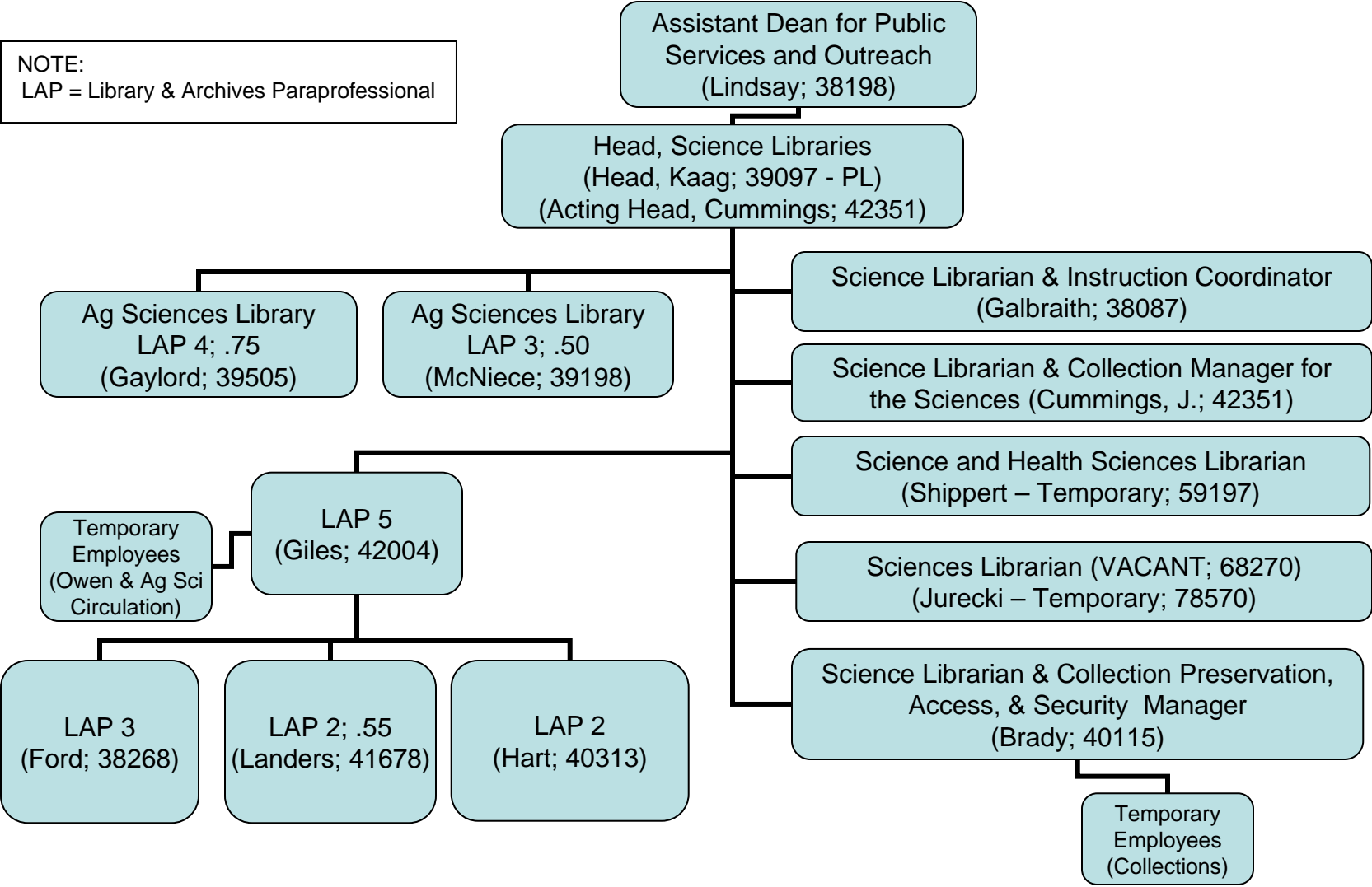
Washington State University Libraries Library Instruction Organization Chart – September 1, 2008



Washington State University Libraries Owen Science & Engineering Library (includes Fischer Agricultural Sciences Library) Organization Chart – September 1, 2008

Back to
All Libraries

NOTE:
LAP = Library & Archives Paraprofessional



Washington State University Libraries Systems Organization Chart – September 1, 2008

[Back to
All Libraries](#)

